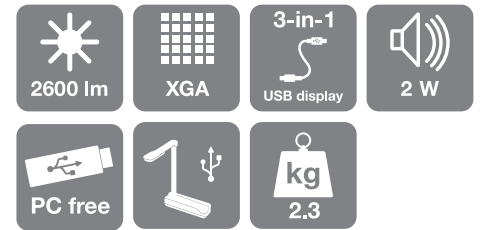


Epson EB-X11 projector

DATASHEET



Make your school's budget go further with the Epson EB-X11 – the high-quality XGA projector with a wide range of features and an affordable price tag.

Packed with user-friendly features, the EB-X11 is straightforward to set up and use, allowing you to focus on teaching. With equally high White and Colour Light Output of 2,600 lumens, and 3000:1 contrast ratio, you can achieve a bright, sharp image. Epson's 3-in-1 USB Display feature means that one cable is all you need for picture, sound and page up/down control – it's the fastest way to display what's on your PC or Mac. Alternatively, using the PC-free feature, you can present still photos directly from a USB stick without powering up your computer.

Aligning the picture is quick and easy with both automatic vertical keystone and manual horizontal keystone adjuster. The horizontal keystone slider is an innovative and intuitive new design feature from Epson, making it easy to adjust images to the correct shape when the projector is placed at an angle to the screen. This compact and stylish projector is very well-suited to installation thanks to a host of useful features. The direct power on/off feature enables the projector to be turned on directly by pressing the wall switch while the tailor-made ELPMB23 optional ceiling mount makes installation quick and simple.

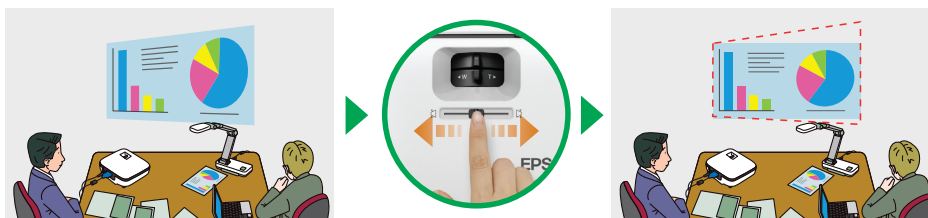
Capture the attention of your class by plugging the optional Epson USB Visualiser ELPDC06 directly into the projector to give a close-up view of 3D objects – perfect for science experiments. A built-in 2W speaker ensures students won't struggle to hear, and distracting hot air is kept away from your audience by the projector's front exhaust.

KEY FEATURES

- Sharp picture quality thanks to 2,600 lumens and 3000:1 contrast ratio
- 3-in-1 USB Display: one USB cable is all that's needed for picture, sound and page up/down control
- PC-free: present still photos directly from USB storage devices
- Automatic vertical keystone correction and manual horizontal keystone correction adjuster for easy set-up



Eliminate the need for photocopies: share 3D objects using the ELPDC06 visualiser



Horizontal Keystone Correction Adjuster: This intuitive new slider lets you adjust images to the correct shape when the projector is at an angle to the screen



EPSON
EXCEED YOUR VISION

PRODUCT SPECIFICATIONS

PROJECTION TECHNOLOGY LCD Panel	3LCD Technology 0.55-inch without MLA
RESOLUTION	XGA (1024 x 768) (4:3 aspect ratio) Up to 1080i
WHITE LIGHT OUTPUT * Normal/Eco	2600 / 2080 lumens
COLOUR LIGHT OUTPUT * Normal/Eco	2600 / 2080 lumens
CONTRAST	3000:1
SCREEN SIZE	30-inch to 300-inch
PROJECTION DISTANCE	60-inch screen: 1.8 - 2.17m
THROW RATIO	1.48-1.77:1
ZOOM	Optical x1.2
KEystone CORRECTION	Automatic vertical $\pm 30^\circ$, and manual horizontal adjuster $\pm 30^\circ$
LENS TYPE F Number Focal Length Offset Focus	1.58 - 1.72 16.9 - 20.28mm 8:1 Manual focus
LAMP Life (Normal/Eco) Type	4000 / 5000 hours 200W UHE - E-TORL
CONNECTIVITY Video Input Computer Input USB memory device input 3-in-1 USB Display Input Audio Input Control Input Epson USB Visualiser Input Computer output Audio output	1 x RCA, 1 x S-Video, 1 x Component (D-sub 15-pin) 1 x D-sub 15-pin (RGB), 1 x USB 2.0 type B 1 x USB 2.0 type A 1 x USB 2.0 type B 1 x RCA (White/Red) 1 x RS232C, 1 x USB 2.0 type B ELPDC06 (direct connection via USB A) 1 x D-sub 15-pin 1 x Stereo mini-jack
ADVANCED FEATURES Security Operation EasyMP PC-Free Display	Padlock & security cable hole, Kensington lock, password protection Direct Power On/Off, Instant Off, AV Mute Slide Photo viewer via USB type A (compatible with JPEG/PNG/GIF/BMP) 8 colour modes
LANGUAGES	English / French / German / Italian / Spanish / Dutch / Portuguese / Russian / Swedish / Norwegian / Finnish / Danish / Bulgarian / Polish / Hungarian / Czech / Slovak / Romanian / Croatian / Slovenian / Ukrainian / Catalan / Greek / Turkish / Arabic / Hebrew / Hindi / Japanese / Simplified Chinese / Traditional Chinese / Korean / Thai / Indonesian / Malay / Vietnamese
NOISE LEVEL (Normal/Eco)	37 / 29dB
SOUND	1 x 2W
WEIGHT	2.3kg
DIMENSIONS (W x D x H)	295 x 228 x 77mm
POWER CONSUMPTION Normal/Eco Standby	270 / 223W 0.47W
WARRANTY	2 years on main unit; 1 year on lamp
SAFETY REGULATIONS	IEC 60950-1 1st edition (CE marking) EMC directive (89/336/EEC) Recycling regulations

PRODUCT LOGISTICS

SKU CODE	VXXXXXXXXX
BARCODE	XXXXXXXXXXXX
WHAT'S IN THE BOX	EB-X11 projector, power cable 1.8m, computer cable 1.8m, remote control and batteries, user's manual set
GROSS WEIGHT	3.7kg
CARTON DIMENSIONS (L x W x H)	366 x 338 x 155mm



OPTIONAL ACCESSORIES

- Carrying case
V12H001K63 (ELPKS63)
- Spare lamp
V13H010L67 (ELPLP67)
- Air Filter
V13H134A32 (ELPAF32)
- 50-inch Desktop screen 4:3
V12H002S32 (ELPSC32)
- 80-inch Mobile screen 16:9
V12H002S21 (ELPSC21)
- 80-inch Pull-up screen 16:10
V12H002S24 (ELPSC24)
- Multi-aspect screen
65-inch/74-inch/80-inch
V12H002S26 (ELPSC26)
- Epson USB Visualiser
V12H321003 (ELPDC06)
- Epson Desktop Visualiser
XXXXXXXXXX (ELPDC11)
- Ceiling Mount
V12H003B23 (ELPMB23)
- Ceiling pipe 668-918mm
V12H003P13 (ELPFP13)
- Ceiling pipe 918-1168mm
V12H003P14 (ELPFP14)



The EB-X11 projector is designed to offer direct lamp access when using the optional ceiling mount ELPMB23 (top). Share microscopic images with the optional ELPDC11 desktop visualiser (bottom).

For further information please contact your local Epson office or visit www.epson-europe.com

Austria 0810/20 01 13 (0,07 €/Min.) Belgium 070/350120 (0,1735 €/min.) Czech 800/142 052 Denmark 44 50 85 85 Finland 0201 552 091 France 09 74 75 04 04 (Cost of local call, operator charges may apply) Germany 01805/23 41 10 (0,14 €/Min. aus dem dt. Festnetz, Mobilfunkpreise abweichend. Ab 1.3.2010 Mobilfunkpreis max. 0,42 €/Min.) Greece 210-8099499 Hungary 06800 147 83 Ireland 01 436 7742 Italy 02-660321 10 (0,12 €/min.) Luxembourg 900/43010 (0,24 €/min.) Middle East +9714 8818934 Netherlands 0900-5050808 (0,05 €/oproep + 0,15 €/min.) Norway +47 67 11 37 00 Poland 0-0-800 4911299 (0,16 zł/min.) Portugal 707 222 111 Russia (095) 777-03-55 Slovakia 0850 111 429 South Africa (+2711) 465-9621 Spain 93 582 15 00 Sweden 0771-400135 (Mobilsamtal - 0,99 kr/min, Lokala samtal - 0,30 kr/min, Utlandssamtal - 0,89 kr/min) Switzerland 0848 448820 (4-8 cent./min.) Turkey (0212) 3360303 United Kingdom 0871 222 6702

Trademarks and registered trademarks are the property of Seiko Epson Corporation or their respective owners.
Product information is subject to change without prior notice.