



The Epson EH-TW550 seamlessly fuses high affordability with impeccable projection quality. With support for multiple 3D formats, lightweight RF 3D glasses and remarkable brightness for maximum realism, the EH-TW550 takes home entertainment to the next level. Compactly designed for portability, it also features hassle-free horizontal keystone adjustment function to eliminate image distortion issues.



Horizontal
Keystone
Adjuster



3000
Lumens



3D
Glasses



2W
Speaker



HDMI



3-in-1
USB Display

Full Support for Multiple 3D Formats

EH-TW550 features great portability with unprecedented levels of 3D brightness and support for multiple 3D formats without the need for a format converter.

Lighter RF 3D Glasses

New Radio Frequency 3D glasses are lighter than previous InfraRed glasses, with no 'line-of-sight' issues for unrestricted viewing angles.

Convenient Adjustment of Images

Intuitive one-touch horizontal keystone correction eliminates distorted images for more flexible projector placement.



The Epson EH-TW550 is a highly affordable 3D home theatre projector that delivers quality entertainment and immersive gaming experience right in your living room. It features 720P HD resolution, unrestricted viewing angles with RF 3D glasses and easy screen correction for convenience and enhanced viewing experience.



Full Support for Multiple 3D Formats

Say goodbye to the hassle of 3D format converters. Unlike 3D ready projectors, the Epson EH-TW550 features full support for formats including top and bottom, side by side and frame packing, therefore bypassing the need of 3D format converters. All you have to do is to connect your device directly to the projector and select your preferred 3D formats.

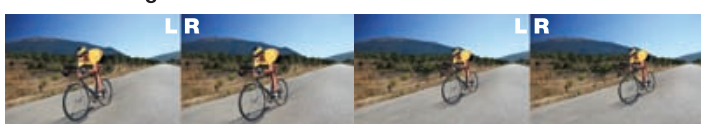
3D Ready vs 3D Full Format via HDMI



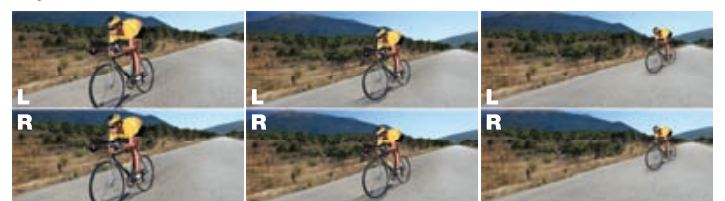
Side by Side



Frame Packing



Top and Bottom



Lighter RF 3D Glasses

Lighter than InfraRed 3D glasses, the new RF Full HD 3D glasses are more comfortable and connected via Bluetooth, thereby eliminating 'line of sight' and transmission interference for unrestricted viewing angles.



Infrared

Bluetooth

Convenient Adjustment of Images

Enjoy your viewing experience anywhere in your room. With the easy-to-use Horizontal Keystone Slider, screen corrections can be done quickly, easily and accurately.

The automatic vertical keystone detection and adjustment feature detects the projector vertical keystone distortion and corrects it instantly, so there is no need for awkward and time-consuming manual image adjustments that interrupt the smooth flow of the projection output.



Horizontal and Vertical keystone allow projection from various angles



Sliding Horizontal Keystone Adjustment

Brighter and Vibrant Colour Display

The EH-TW550 is the first Epson home projector that delivers 3000lm of brightness. This is achieved with Epson's renowned 3LCD technology that maximises light efficiency to produce vivid 3D image quality even under brightly lit conditions.



Compact and Lightweight Design

Weighing only 2.7kg, the EH-TW550 is highly portable and easily handled for set-ups. Its stylish and compact design makes it perfect for delivering amazing 3D entertainment to social gatherings, wherever they may be.



User-Friendly Built-In Speaker

The EH-TW550 includes a built-in 2W speaker that complements your 3D experience wherever you go without the need or hassle of connecting external speakers.



Mono Speaker

Wide Variety of Colour Modes

Choose from a comprehensive range of colour modes, calibrated to suit your viewing environment and contents.

Dynamic Mode

Enjoy vivid image quality during the day without the need to dim the lights.



Living Mode

Enables high image quality enjoyment from the living room, perfect for large family gatherings.



Cinema Mode

Indulge in the authentic cinematic experience in the comfort of your home.



Game Mode

Heighten your gaming experience by bringing more clarity to dark scenes.



3D Cinema / 3D Dynamic

Calibrates the colour mode to enhance your 3D experience.



Wide-Range Connectivity

The EH-TW550 makes home entertainment more accessible with its integrated support for multiple connection methods, including HDMI and USB, to suit a wide range of entertainment devices.

HDMI™
HIGH-DEFINITION MULTIMEDIA INTERFACE



Direct Display from USB

Enjoy greater convenience with the ability to connect the EH-TW550 to your USB devices and output for any stored visual and sound data easily.



Have your pictures projected in a slide show format automatically. Simply save them in JPEG, BMP, GIF, PNG, or Motion JPEG format to your USB storage device and connect it to the projector.



Eco Features

- Equipped with an E-TORL lamp engineered to maximise light usage and power efficiency
- Uses just 0.4W of power in standby mode
- Projector optics employ lead-free lenses
- Unpainted plastic housing reduces the environment impact
- The flame retardants used in the plastic housing do not contain chlorine or bromine

Better Products for a Better Future™

For more information on Epson's environmental programme, visit <http://global.epson.com/SR/environment>.

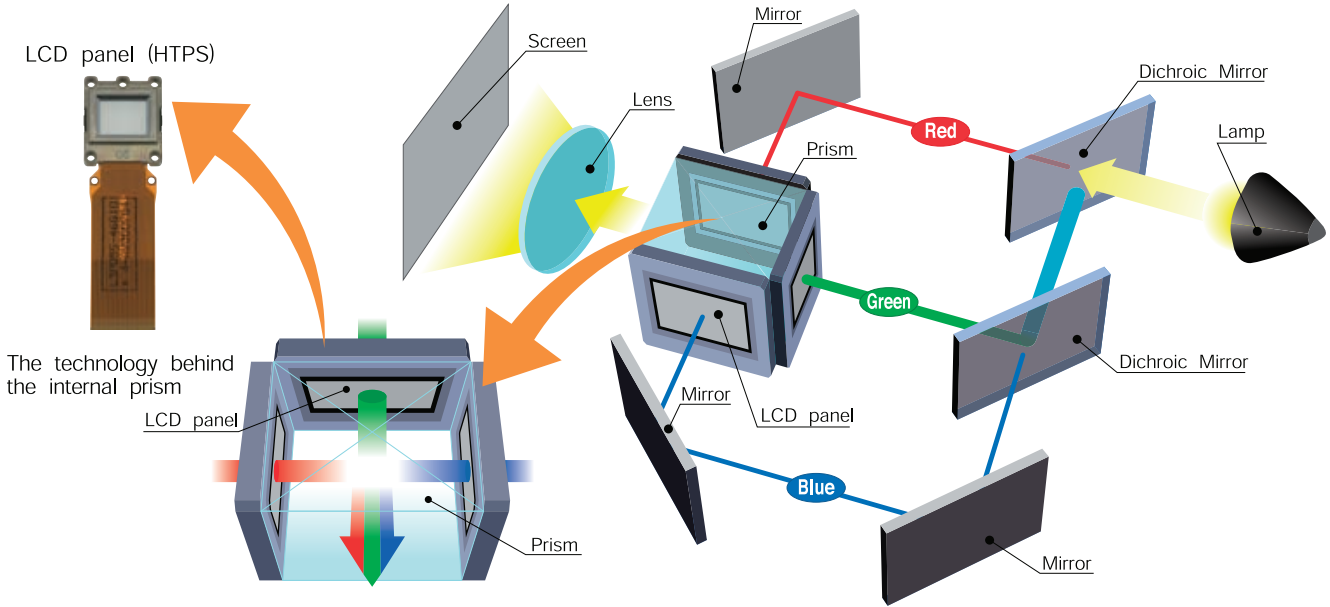
EPSON 3LCD TECHNOLOGY – FOR BRIGHT, FAITHFUL COLOURS

3LCD projectors offer brighter and more accurate colours as they produce different shades and hues by filtering, then mixing beams of the three primary colours (red, green and blue).

In a 3LCD projector, white light is first split into the three beams of primary colours. Each beam is then filtered through its own LCD that will give each individual pixel of the image its exact brightness for each colour. The colour beams are then perfectly recombined in a prism before being projected out as a complete image.

This compares to projectors using single-chip technology that actually project individual colours sequentially by filtering their single white light beam through a colour wheel, and then relying on human colour perception to combine the colours in the viewers' minds.

As a result, 3LCD projectors also offer greater detail, smoother gradations, no "colour breakup" effect, are easier on viewers' eyes, and consume about 25% less power to achieve the same brightness compared to a single-chip projector using a lamp of the same wattage.



3LCD projector : RGB are projected at the same time, which makes the single composite image easy on the eyes.

- An independent test by projector review media ProjectorCentral.com in 2009 of about 800 projectors found that on average, 3LCD projectors use 25% less power than single-chip projectors.

www.3lcd.com

COLOUR LIGHT OUTPUT – TRUE COLOURS SHINING THROUGH

The Brightness Myth

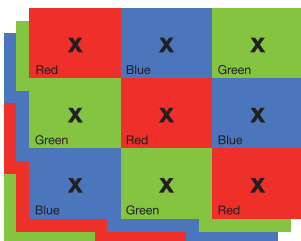
Did you know that the brightness specification (in lumens) for projectors is only a measurement of its white light output?

In fact, many manufacturers artificially boost their projectors' brightness rating by increasing their white light production capability at the expense of colour brightness.

How is Colour Light Output measured?

X	X	X
X	X	X
X	X	X

Brightness (or White Light Output) measures the total amount of white light projected in lumens on a nine point grid. It does not measure colour.

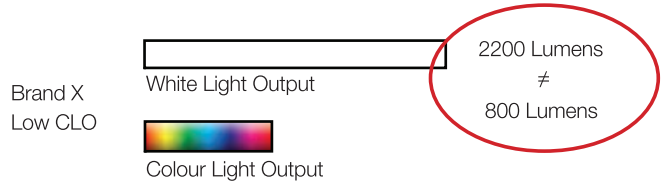
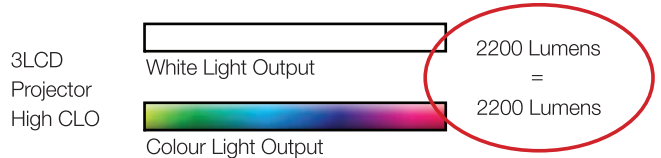


Colour Light Output uses 3 sets of a nine-point grid to measure the primary colours - red, green and blue, using the same approach used to measure White Light Output in lumens.

CLO to Enlighten

To help buyers make better-educated decisions, colour scientists at the U.S. government's National Institute of Standards and Technology (NIST – www.nist.gov) have developed Colour Light Output (CLO) as a specification to provide critical information on a projector's ability to deliver colour.

Colour Light Output is critically important because it measures the brightness of Red, Green and Blue. In a 3LCD projector, these primary colours create white when combined in the right proportions. Beautifully balanced colour is possible when Red, Green and Blue combine to produce the exact colours required. Colour Light Output provides users with an additional way to evaluate a projector and make more discerning buying decisions.



www.colorlightoutput.com

MODEL NUMBER	EH-TW550	
Projection Technology	RGB liquid crystal shutter projection system (3LCD)	
Specifications of Main Parts		
LCD	Size	0.59" with MLA (D8)
	Native Resolution	720p (1,280 x 800)
Projection Lens	Type	Optical Zoom (Manual) / Focus (Manual)
	F-Number	1.58 - 1.72
	Focal Length	16.9mm - 20.28mm
	Zoom Ratio	1 - 1.2
	Throw Ratio	1.30 - 1.56 (Wide - Tele)
Lamp	Type	200W UHE (E-TORL)
	Life (Normal/Eco) ¹	4,000 hours / 5,000 hours
Screen Size (Projected Distance)		
Zoom: Wide	33" to 318" [0.9 to 9.0 m]	
Zoom: Tele	33" to 317" [1.08 to 10.8m]	
Standard Size	60" screen 1.68 - 2.02 m	
Brightness²		
White Light Output	3,000lm	
Colour Light Output	3,000lm	
Contrast Ratio	5,000:1	
Video Quality		
3D Y/C separation, Noise Reduction, Motion compensated Interlace-Progressive conversion (2-2,3-2 film detection)		
Supported Video Signal		
480i / 576i / 480p / 576p / 720p / 1080i / 1080p NTSC / NTSC4.43 / PAL / M-PAL / N-PAL / PAL60 / SECAM		
Colour Mode		
Dynamic, Living room, Cinema, Game, 3D Dynamic, 3D Cinema		
Internal Speaker(s)		
2W (Monaural)		
Keystone Correction		
Vertical / Horizontal	±30° / ±30°	
Auto Keystone Correction	Yes	
Connectivity		
Analog Input	D-sub 15pin	1 (Blue)
	Composite	RCA (Yellow) x 1
	S-Video	Mini DIN x 1
Digital Input	HDMI	1 (HDCP supported)
Audio Input	RCA (White / Red)	1
Others	USB Type A	1 (USB memory)
	USB Type B	1 (3-in-1 USB Display)
Adjustment Functions		
Projector / Remote Control	Brightness / Contrast / Tint / Saturation / Sharpness / Input Signal / Sync / Tracking / Position / Colour Temperature / Volume / etc.	
Quick Corner	Yes	
3D Features		
3D Display	On / Off	
3D Format	Auto / Side by Side / Top & Bottom / 2D / Frame Packing	
Operating Temperature	5°C to 35°C <41°F to 95°F>	
Operating Altitude	0m to 2,286m <0ft to 7,500ft>	
Direct Power On / Off	Yes / Yes	
Startup Period	7 seconds, Warm-up Period: 30 seconds	
Cool Down Period	Instant Off	
Power Supply Voltage	100 - 240V AC ±10%, 50/60 Hz	
Power Consumption (220 - 240V)		
Lamp On (Normal / Eco)	277W / 230W	
Standby (Network On / Off)	3.3W / 0.4W	
Dimensions Excluding Feet (W x H x D)	325mm x 77mm x 243mm	
Weight	2.7kg	
Fan Noise (Normal / Eco)	36 dB / 29 dB	

¹ Lamp life will vary depending upon mode selected, environmental conditions and usage. Lamp brightness decreases over time.

² Colour brightness (colour light output) and white brightness (white light output) will vary depending on usage conditions. Colour light output measured in accordance with IDMS 15:4; white light output measured in accordance with ISO 21118.

Supplied Accessories

Power Cable: 1.8m, 3 Wire (Black)
Remote Control: Compact Type
Battery: Alkaline AA Battery x 2
User's Manual Set

Optional Accessories

Spare Lamp: ELPLP67
Air Filter: ELPAF42 (1 sheet)
3D Glasses (RF Type): ELPGS03
3D Glasses Charger: ELPAC01

EH-TW550



© 2013 Epson Singapore Pte Ltd. All Rights Reserved. Reproduction in part or in whole, without the written permission from Epson, is strictly prohibited. EPSON and EXCEED YOUR VISION are registered trademarks of Seiko Epson Corporation. All other products names and other company names used herein are for identification purposes only and are the trademarks or registered trademarks of their respective owners. Epson disclaims any and all rights in those marks. Print samples shown are simulations only. Specifications and product availability are subject to change without notice and may vary between countries. Please check with local Epson offices for more information.

Dealer's Stamp

Information correct at time of printing
Printed January 2013

Sales Enquiries
6586 3111



Like us @ Epson Singapore

To find out more, visit www.epson.com.sg/projector or call **6586 3111**